

7 Dellwood Court Hastings, VIC



3



1



2

Quiet court, walk to school

Walk to school and cruise to High Street in minutes with this entry-level opportunity in the family-friendly heart of Hastings. This is both a solid first home with scope to update and a smart investment with tenant appeal near Western Port Secondary College. Add a quiet cul-de-sac address and a back yard with room for pets and children to play, minutes to Western Port Bay!

Price:

\$390,000 - \$430,000

- 5-minute walk (approx) to Western Port Secondary College
- Flat 452 sqm (approx) allotment minutes to shops, cafes and restaurants
- Light-filled living with a gas wall furnace and split system air-conditioning
- Single-level living with a central, largely original bathroom
- Alfresco patio framed in a generous back yard with lawn
- Double carport with rear double gates to the back yard
- Quiet location with no passing traffic and a northerly orientation
- Kitchen/meals area with a gas cooktop and a view of the back yard

Malcolm Parkinson Kristen Jones

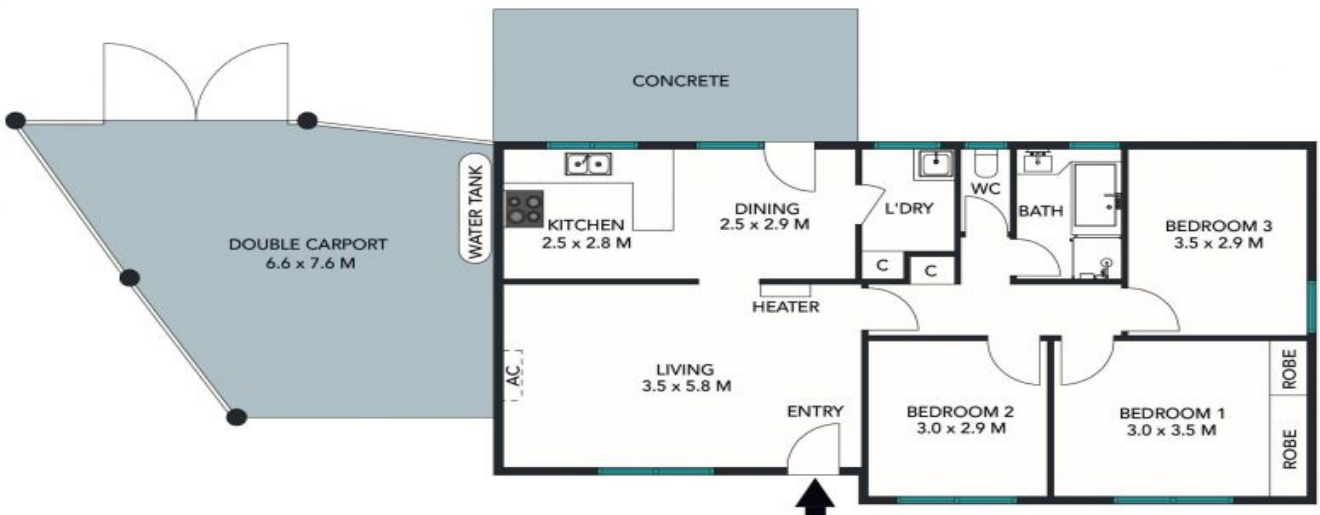
0421 704 246

0426 956 315



The floor plan is not to scale; measurements are indicative and in metres. All features included in the 3D plan are for inspiration purposes only. This is not an exact replica of the property or the position of exterior elements. Plans should not be relied on. Interested parties should make and rely on their own enquiries.

Produced by DIAKRIT



TOTAL LAND AREA : 452 SQM
TOTAL LIVING AREA : 84 SQM

The floor plan is not to scale; measurements are indicative and in metres. Exterior elements are not in position. Plans should not be relied on. Interested parties should make and rely on their own enquiries.

Produced by DIAKRIT